

Muir Lake School Development Plan 2022 - 2023





Message From Our Leaders



School Principal

Welcome to our development plan!
The plan was created in collaboration with our school community stakeholders.
The plan is a map of where we came from to where we would like to go.
The goal is to improve our school. We want to improve our students' learning experience, our staff's ability to improve our relationships with our students and our community to help progress our school's trajectory upwards.
Please take the time to review the plan and collaborate with us to guide the future of Muir Lake School.

Mr Fuñe

School Council Chair

My name is Amber Dory I am the chair of school council. I have been involved with the school council for five years. Last year and this year being chair. As our amazing school grows I hope to have more parents join in our meetings at school council. It's a way to stay informed on what's happening at our school. We have the option to meet in person and virtually as well. Welcome to new staff, students and parents we truly have a remarkable school.

Mrs Dory



Muir Lake Community School



Ultimate Goal: Student Success and Well-being

Education happens both minute-by-minute and across generations. Our staff members demonstrate the belief that student success is closely linked to student well-being and the development of social-emotional assets that build resilience. Student Success and Well-being is our Ultimate Goal—the greatest reward for reaching our vision.

Muir Lake Motto:
Every child learns, every child succeeds.

Foundational Statements

Our Ultimate Goal is Student Success and Well-being.

We therefore value:

- Learning opportunities that are:
 - Purposeful
 - Essential
 - Relevant
 - Authentic
 - Responsive
- Excellence in achievement
- Trustworthy, respectful relationships
- Resilience with self-awareness



Muir Lake School



School Development Plan 2022-2023

There are 501 students from kindergarten to grade 9 with an additional 24 students that attend the Nature kindergarten program. At Muir Lake School, “Every child learns, every child succeeds” is the cornerstone of our philosophy of education. As part of Parkland School Division, we assure supportive learning environments, meaningful experiences and healthy relationships that create opportunities to develop resilience, to gain diversity in perspectives and to achieve enduring success

School Council Chair
Mrs. Amber Dory

Date

Principal
Mr. Andy Fuñe

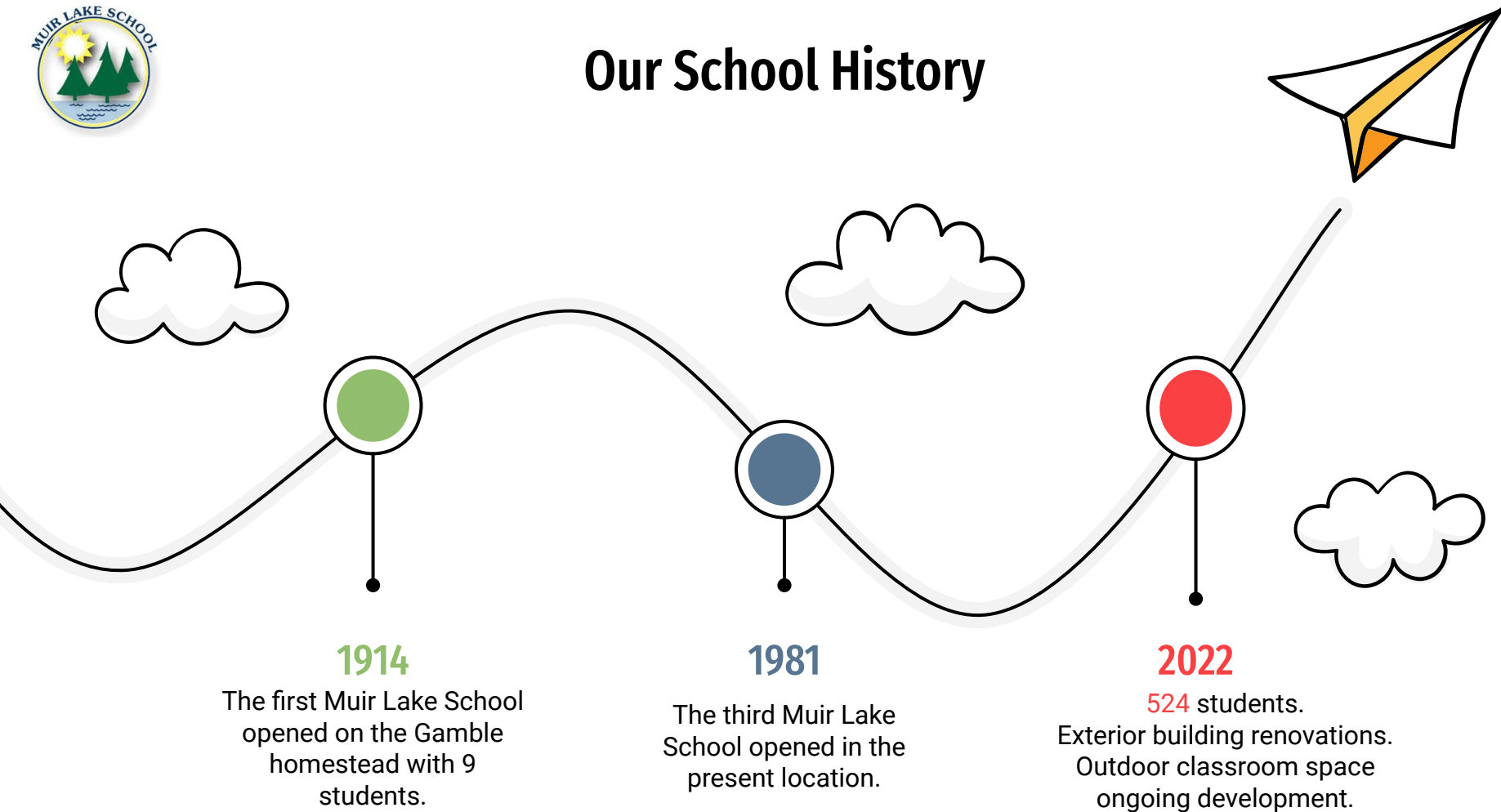
Date

Assistant Principal
Miss Tracey Gilmour

Date



Our School History





Our School Context

Strong Community

Active School Council & Muir Lake Foundation.

Strong parent involvement in many different settings.

Academics

Technology emphasis.
Focused academic learning environment.
Diverse complementary course program in Grades 7-9.
Music Program K - 6.

Comprehensive School Health

200 meter running track.
Top notch playground.
Middle years sports: volleyball, basketball, badminton, track and field.
Outdoor Learning Spaces.
Home to PSD's Nature Kindergarten.



A

B

C



Who We Are At Muir Lake



Students

501 students K-9
24 Kindergarten
age students
join us in Nature
K from across
the division



Staff

22 Teachers
9 EAs
2 Office Staff
1 Librarian
1 Counselor



Leadership

Principal:
Andy Fuñe
Ast. Principal:
Tracey Gilmour
Trustee:
Lorraine Stewart
Council Chair:
Amber Dory

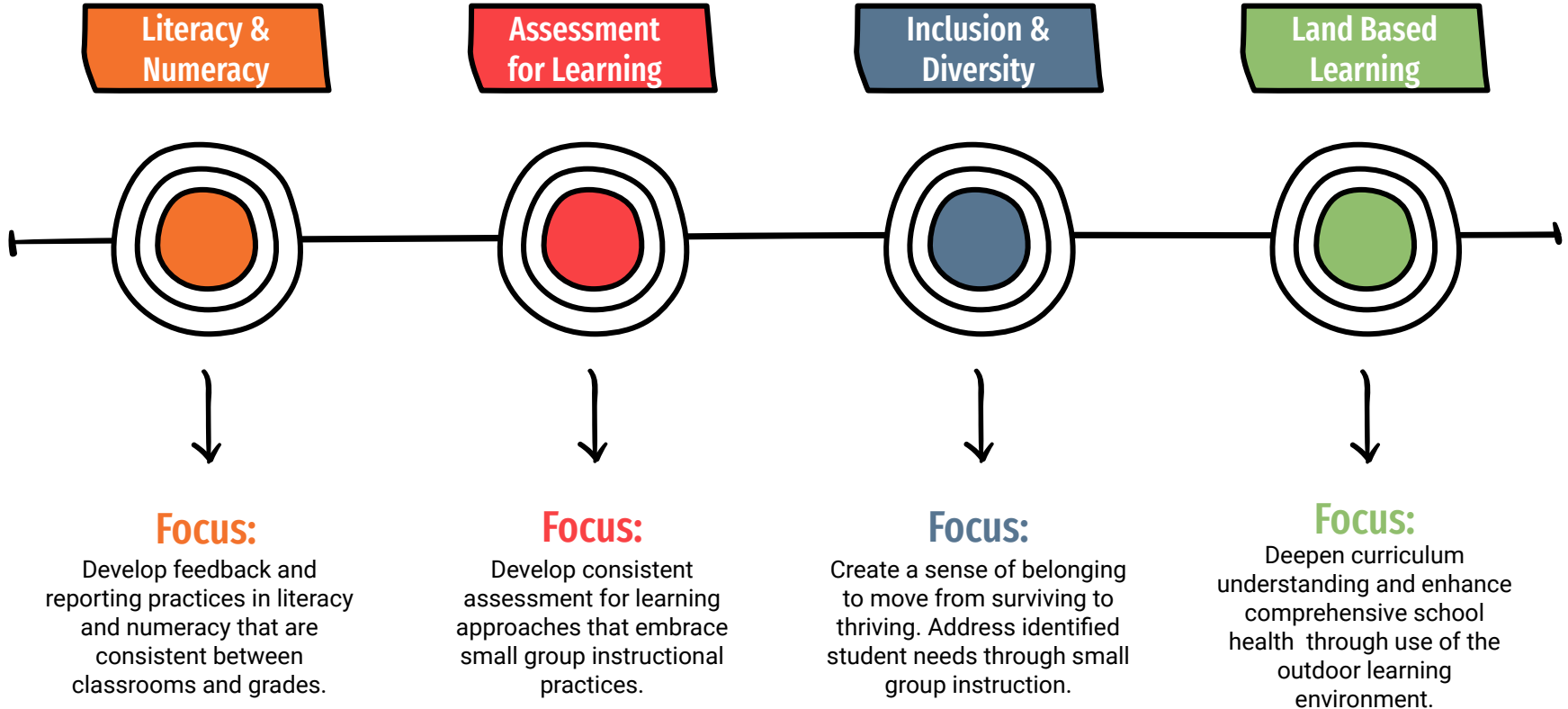


Volunteers

There are many
parents, student
teachers, and
community
members each
year who help to
enrich learning
opportunities.

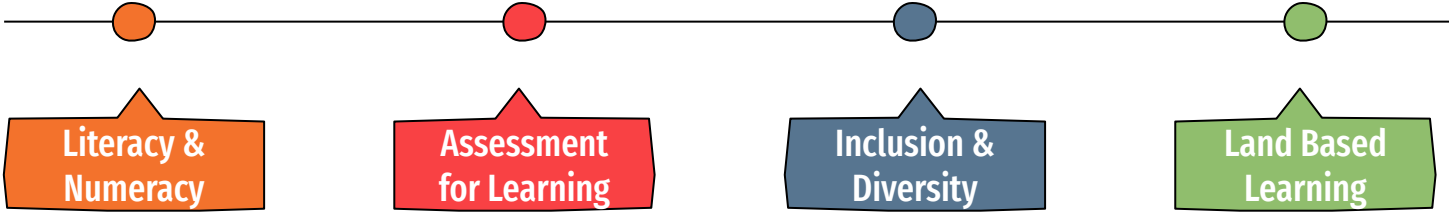


2022 - 2023 School Goals





Why These Goals Are Important To Muir Lake School

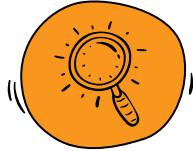


Literacy & Numeracy

Assessment for Learning

Inclusion & Diversity

Land Based Learning



Where we are now:

A wide range of feedback tools, formative and summative, are used across the school to inform grading and reporting in reading that are not always consistent.

Where we are now:

A range of formative assessment tools are currently used throughout the school that are not always consistent.

Where we are now:

Unconscious bias has been a focus for staff PD since the 2021/2022 school year.

Where we are now:

We have a rich but underused outdoor learning space for education and physical activity which supports Comprehensive School Health.



Where we are going:

Develop a coherent framework for writing and math that provides consistency through a common assessment language that spans the grade levels.

Where we are going:

Appraise and develop current Assessment for Learning practices K-9 to support student academic progress through small group instruction.

Where we are going:

Unconscious bias will continue to be a focus for PD for 2022/2023. PD focus on small group instruction to meet differentiated student needs.

Where we are going:

Increase the number of staff and students accessing the outdoor environment for intentional learning time to enhance deep curriculum understanding.



Achieving Our Goals



Strategy Roadmap

Literacy & Numeracy	Assessment for Learning	Inclusion & Diversity	Land Based Learning
Evaluate current school wide literacy and numeracy feedback and reporting language.	Ongoing professional development focus.	Ongoing professional development focus.	Ongoing professional development focus.
Create a common writing, reading and math feedback rubric that spans grade levels.	Conduct an appraisal of current AFL practices across school.	Continue with the onsite counseling program for individual and group support.	Create a Land Based Learning mentorship program in consultation with local Elders and Division Facilitator.
Division Principal / Facilitator consultation for best practice in small group instruction.	Develop student centred assessment for learning strategies that improve performance through small group instruction in literacy and numeracy..	Continue to connect families to outside support agencies through the division Community Connector.	Support volunteer flagship classrooms in each division.
Division Principal / Facilitator consultation for best practice in literacy and numeracy feedback and reporting.	Division Principal / Facilitator consultation for best practice.	Utilize small group instruction to support individual student needs.	Create a professional development resource library.



Measures of Success

	Literacy & Numeracy	Assessment for Learning	Inclusion & Diversity	Land Based Learning
Baseline	<ul style="list-style-type: none">● QPAS (K-3)● Brigance (K)● F&P (1-9)● Words Their Way (1-9)● MIPI (K-9)● AB Ed (1-4)	<p>Teacher self-evaluation of current confidence and skill in using AFL and Small Group Instruction.</p>	<ul style="list-style-type: none">● Teacher survey to understand confidence in small group instruction.● Staff survey to determine understanding of unconscious bias.	<p>Elder provides input into current and future Land Based Learning</p>
End of Year	<ul style="list-style-type: none">● QPAS (K-3)● Brigance (K)● F&P (1-9)● Words Their Way (1-9)● PAT	<p>Teacher self-evaluation of current confidence and skill in using AFL and Small group Instruction.</p>	<ul style="list-style-type: none">● Teacher survey to understand confidence in small group instruction.● Staff survey to determine understanding of unconscious bias.	<p>Input provided by an Elder is visibly incorporated into Land Based Learning</p>



Professional Development Days

August 25 - 29
 New Curriculum
(Literacy and Numeracy)
 Visible Learning
(AFL)
 NVCI
(Inclusion & Diversity)
 Outdoor Learning Store
(Land Based Learning)

January 30
 Li & Num: Numeracy
 division PD
 EAs: Learning Services
 program
(Inclusion & Diversity)

March 24
 EAs: Learning Services
 program
(Inclusion & Diversity)

May 19
 ??????

October 7
 EAs: Learning Services
 program
(Inclusion & Diversity)
 Teachers: PD on Small
 group instruction and
 reading assessment
(Lit & Num / AFL)

February 17
 Lit & Num: Literacy Division
 PD
 EAs: Learning Services
 program
(Inclusion & Diversity)

April 28
 EAs: Learning Services
 program
(Inclusion & Diversity)

