

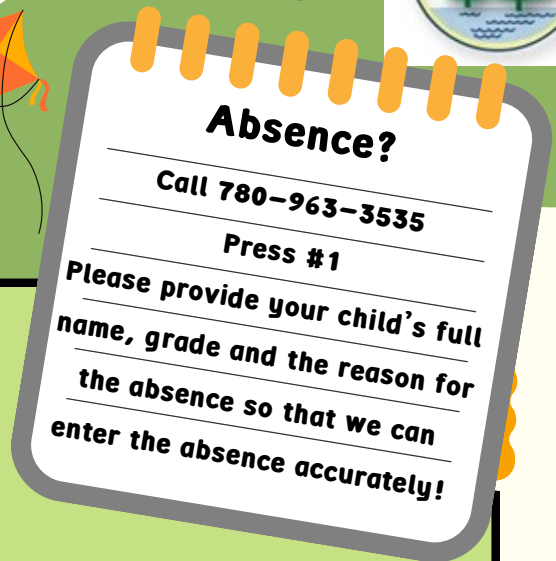
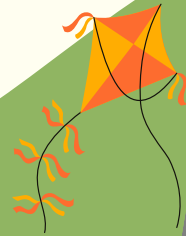


Mustang Memo



May 24th, 2024

Today's Top Stories



Registration for 2024–2025 year – if you have not done so already please do so as soon as possible. Planning has begun for next year!

School Fees are due! Please check your PowerSchool account to see if you have fees that need to be paid. We will send out reminders for people that owe soon!



YEARBOOK

Yearbooks are available now!

Go to PowerSchool under fees and select yearbook to order now!

Join us for the Last School Council Meeting for the school year May 29th at 7:00 pm

We would like to take the opportunity to thank all of our parents that took the time to participate in our School Council meetings; your input is greatly appreciated. School Council meets once a month. If you would like to take part for the 2024–2025 school year please watch for information to be coming out in the fall.

Class Placement for Next Year

Student placement is a very complex process that we take very seriously. School staff and specialists (such as teachers, counselor, administration, etc.) review student placements several times up until the opening day of the 2024-2025 school year.

In addition to individual circumstances, criteria considered in the placement process include:

Workable instructional groups considering:

- the child's academic needs and strengths
- teaching and learning styles
- the child's work habits

Positive social groups considering:

- placements where a child can work positively and productively with other children in the class
- peer support or conflicts
- establishing the presence of positive leaders in each class
- ratio of grades in split classes

Balanced classes considering:

- gender (male/female)
- students with Special Needs
- students who are English Language Learners
- academic, social, and emotional needs and abilities
- leadership abilities

Other Information considered:

- the past history of students in combined or single grade classes
- school-based resource team recommendations

The class placement process ensures thoughtful consideration of each child's social, emotional, and academic needs is aligned with the need to create balanced and effective learning environments. The assignment of students to classes is decided by a team, which includes the child's current teacher, possible teachers for the coming year, the School Counselor, and the School Administration. This professional team considers each placement carefully as they create classes that include a wide range of students who learn in a variety of ways.

A Note about Combined Classes

Combined class organizations result from imbalances in the number of students in particular grade levels. In today's reality that often means that the school organization needs to include some combined classes. For example, we might have 41 Grade One students, but the class size limit is 25; we would need to create a Grade One class and a Grade One/Two class with the remainder of the Grade One students and some Grade Two students. Depending on the number of students at each grade level, using all of the criteria above may well result in the creation of some combined classes. Many areas of the student's growth are considered in a student's placement such as: social skill development, physical size, independence in work habits, leadership potential, personal initiative, and organizational skills. Consideration is also given to previous placement in a combined class. Please rest assured that if your child is placed in a combined class, the grade appropriate curriculum that is prescribed by the Ministry of Education will be taught.

Fundraising EVENT

RALLY UP RUN, WALK, JOG FUNDRAISER



WE ARE ALMOST TO THE
FINISH LINE! For more
information click [HERE!](#)

To Sign up, go to
[Muir Lake Run/Jog/Walk-A-
Thon | RallyUp](#)



Collect
pledges!

Win
prizes!!

New
Playground!!



Finish Line - Let's Start Building



Write-On Stationery Supplies Fundraiser

Starting this coming week!



As in previous years, Muir Lake School is once again partnering with Write-On Stationery to give parents the opportunity to order school supplies for your students as a Fundraiser. Write-On Stationery will package your child's supplies that you have ordered and deliver them directly to Muir Lake School in the last week of August. Simply pick up the box from the school when it comes in and your child will be ready to go. To order their grade supplies according to what your child will need in the fall, simply go to <https://www.write-on.ca/shop> and follow the instructions below. Be sure to place your order by August 1st in order to have it delivered to the school for the start of school.



- Go to www.write-on.ca
- Click on “PARENTS – Order Here”
- School Name: Muir Lake School – STONY PLAIN
- Choose your grade and place your order.
- Complete your order by clicking ‘PLACE ORDER’
- You will receive an automatic email confirmation to confirm your order has been received
- We accept VISA, MC, AMEX, Visa Debit and Interac On-line.

MAY 2024						
SUN	MON	TUE	WED	THU	FRI	SAT
			1	2	3	4
5	6	7	8	9	10	11
12	13	14	15	16	17	18
19	20	21	22	23	24	25
26	27	28	29	30	31	

Important Dates - MAY

May 24th - Track and Field Grades 4-6

May 29th - School Council Meeting 7:00

Important Dates - JUNE

June 7th - Triathlon

June 12, 13, 19th - Grade 9 PATS

June 19 and 20th - Grade 6 and 9 PATS

June 21st - National Indigenous Peoples Day

June 27th - LAST DAY OF SCHOOL

JUNE 2024						
SUN	MON	TUE	WED	THU	FRI	SAT
						1
2	3	4	5	6	7	8
9	10	11	12	13	14	15
16	17	18	19	20	21	22
23	24	25	26	27	28	29
30						



LEARN AS YOU GROW



Discover

FRIENDS

Bee School!





Track and Field



Other News

[May Stronger Together Newsletter](#)

[June Stronger Together Newsletter](#)



**FRIDAY
June 7
2024**

REGISTRATION OPENS **FIND DETAILS AT**

**FRIDAY
MAY 10** www.psd.ca/division/student-wellness/try-me-try-athlon

Muir Lake Out of School Care

6:30AM–8:00A

2:35PM–6:00PM

Kindergarten non-school days NOT included.

\$550/Month includes PD Days, Spring Break, Fall Break

\$425/3 day Kindergarten

CLOSED for the Summer

OPEN HOUSE Thursday, February 15th from 6:00PM — 7:00PM

Please call (825)977-6607 for more information or to book your tour today.

Email: muirlakeosc@gmail.com



Location:

TransAlta Tri Leisure
Centre

Time:

9-11 p.m.

(Sign-in & bag checks
start at 8:15 p.m.)



Date:

May 25, 2024

Ages:

13-18

Cost:

Free!
(registration required)

Teen Takeover is a night where parents stay home and teens "Takeover" the TransAlta Tri Leisure Centre. Teens have exclusive access to the pool and gymnasium at the TLC. Join us for a night of swimming, drop-in gym activities, food, and friends.

TO REGISTER:

🌐 ONLINE: [SPRUCEGROVE.ORG/TEENTAKEOVER](https://sprucegrove.org/teentakeover)

📞 BY PHONE: 780-962-7632

👤 IN PERSON: BORDER PAVING ATHLETIC CENTRE (MAIN FLOOR), 9 TRI LEISURE WAY

For more information visit: sprucegrove.org/TeenTakeover



**Summer fun is about to begin
in Spruce Grove!**

From Art Explorer and Adventure Camp,
to Teen Retreat, Leaders in Training, and
Pop-Up Playground, there's something for
everyone ages 6-18



For complete program information:
sprucegrove.org/SITC



**GR. 10
PARENTS
YOU'RE
INVITED!**

MCHS SCHOOL COUNCIL



Join our current School Council members for our last meeting of the year. This opportunity will allow you to see how your voice can be heard and meet Mr. Haley, the new MCHS Principal!

WHY SHOULD YOU JOIN SCHOOL COUNCIL?

- Get a full picture of how MCHS & Parkland School Division run
- Get tips for helping your student
- You don't have to be at every meeting
- You can join meetings virtually
- Your involvement improves the school community
- It's like the newsletter, but BETTER



MAY **27** 2024



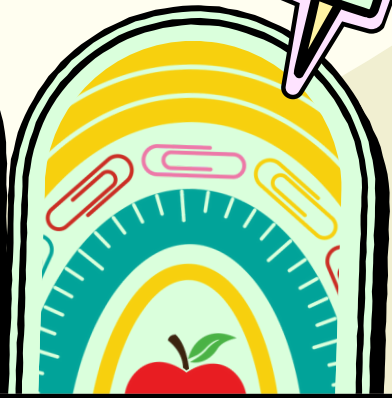
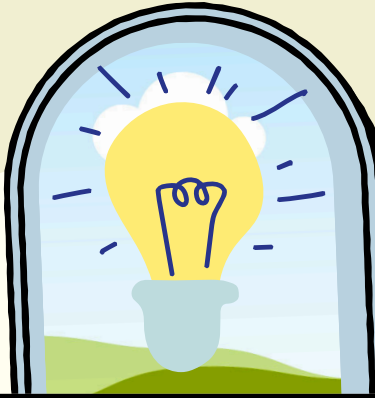
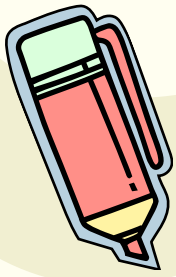
AT **7:00** PM

50 Westerra
Centre
Stony Plain, AB



More Info :
780-963-2255
www.mchs.psd.ca





General Information



Parking at School Safely: If you are driving your child to school, then we respectfully ask that you drop them off in either the Muir Lake Hall parking lot or use the drop off lane and let them out at the NORTH and SOUTH end of the parking lot so that they can use the crosswalk which is monitored by the staff. For the safety of everyone, we remind everyone that there is to be absolutely NO PARKING on the side of the highway. Please do not use the staff parking lot for drop off, the parking lot can get VERY busy, so we appreciate your patience as our top priority is to keep all of our students and staff safe.

Visiting the School: Last year we had new security doors installed in the front entrance. This allows us to leave our front door unlocked. If you are at the school for any reason, please check in at the office. Morning Supervision: Staff will begin supervision at 7:45am so we respectfully request that you do not drop your children off until after this time. Students will remain outside until the bell rings at 8:00am, then at this time they will make their way to the classroom through their designated doors. If they arrive ANY time after 8:10am they are required to go to the office through the front door to obtain a late slip.

Attendance Calls: If your child(ren) is not in attendance, please be sure to either call (780) 963-3535 and press 1 to access the attendance mailbox OR email the office at MuirLake@psd.ca, stating when and why your child will be away. If the office does not know why students are away then the fan-out message will automatically go out as they will be marked as absent with an unknown reason.

School Fees: Statements for the 2023 2024 school year fees will be going out via email soon, if you do not receive it then check your junk mail or let the office know. Upon receipt, fees can be paid online by debit or credit card through our PowerSchool Parent Portal at <https://powerschool.psd.ca/public> or by cash or cheque payable to Parkland School Division (PSD). If for some reason you are unable to pay the fees right away arrangements may be made by calling Andy Fuñe at 780- 963-3535.

Fair Notice – Violent Threat Risk Assessment: The goal of Violence/Threat Risk Assessment (VTRA) process is that every incident of youth violence in our communities be addressed. VTRA is early intervention – which is quite possibly prevention. The process is initiated and managed by school administrators who have received VTRA training from the Center for Trauma Informed Practices. For more information, please visit our PSD website and read the news article [LINKED HERE](#).



Food Programs

Food for Thought: We all know that children learn better on a full tummy. We have a cooler inside our office that will be stocked with healthy snacks and food for the students. They will be able to access it at any time during the day and out of consideration to everyone's privacy, staff will not be monitoring who uses it.

****In keeping with Parkland School Division's commitment to student success and well-being, we are once again working to promote healthy eating and create a positive food environment for all students.**

We would like to acknowledge the President's Choice Children's Charity Power Full Kids program in providing support for food security at Muir Lake for the 2023 – 2024 school year.**

Breakfast Club – We have started our Breakfast Club for the year and it is busy! Breakfast club is for everyone! We know that mornings can be busy. Every morning starting at 7:45 till 8:10 our kitchen is serving up toast and other healthy options. We are always looking for more volunteers to help the program run smoothly. Reach out if you are available during these times to help out at christine.ellert@psd.ca.

Lunch Program is Back!! Bite to Eat is excited to begin another year of hot lunch service to Muir Lake students. Deliveries will again be on Mondays & Thursdays.

**HOT LUNCH MONTH
PAYMENT DUE DATE**

May 2024 – April 24, 2024

June 2024 – May 29, 2024